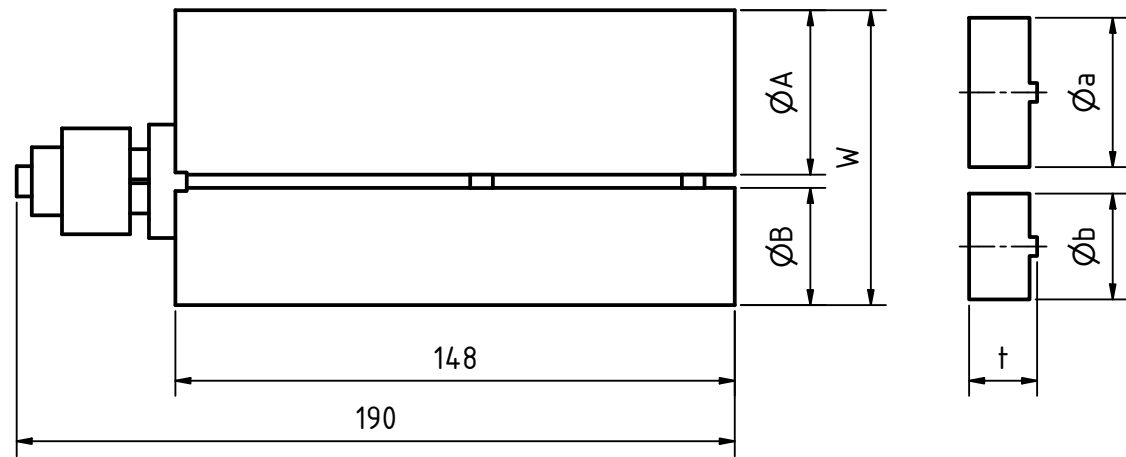


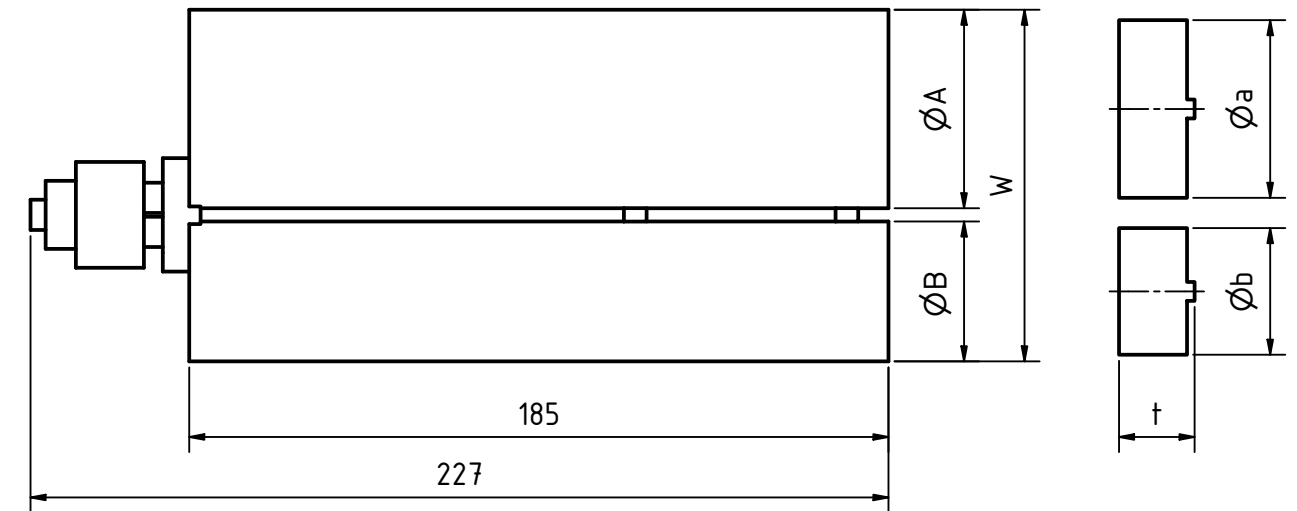
Maßblatt für MIXPAC C- & F-System Kartuschensets (Dimension sheet for MIXPAC C- & F-system cartridge sets)

Serie 200 (series 200)



Passende Kartuschenpressen (matching dispensers):  
 Pneumatisch (pneumatic)  
 MIXPAC DP2X 200 MV (ratio) 1:1, 2:1 - 0001-5203-0800  
 MIXPAC DP2X 200 MV (ratio) 4:1 - 0001-5203-1000  
 MIXPAC DP2X 200 MV (ratio) 10:1 - 0001-5203-0900  
 Manuell (manual)  
 MIXPAC DM2X 200 MV (ratio) 1:1, 2:1 - 0001-5203-0200  
 MIXPAC DM2X 200 MV (ratio) 4:1 - 0001-5203-0500  
 MIXPAC DM2X 200 MV (ratio) 10:1 - 0001-5203-0400


Serie 400 (series 400)



Passende Kartuschenpressen (matching dispensers):  
 Pneumatisch (pneumatic)  
 MIXPAC DP2X 400 MV (ratio) 1:1, 2:1 - 0001-5203-0100  
 MIXPAC DP2X 400 MV (ratio) 4:1 - 0001-5203-1200  
 MIXPAC DP2X 400 MV (ratio) 10:1 - 0001-5203-1100  
 Manuell (manual)  
 MIXPAC DM2X 400 MV (ratio) 1:1, 2:1 - 0001-5203-0300  
 MIXPAC DM2X 400 MV (ratio) 4:1 - 0001-5203-0600  
 MIXPAC DM2X 400 MV (ratio) 10:1 - 0001-5203-0700

ca. Maße, in mm (approx. dimensions, in mm)

B Serie (series)	Füllmenge (volume)	MV (ratio)	Artikel (item)	Komponente A (component A) ØA	Komponente B (component B) ØB	W	Kolben A (piston A) Øa	Kolben B (piston B) Øb	t
200	210 ml	1:1	AC 200-01-XX-XX AF 200-01-XX-XX	37	37	78	33.5	33.5	17
	215 ml	2:1	AC 200-02-XX-XX AF 200-02-XX-XX	43.5	31	80	39.5	28	18
	225 ml	4:1	AC 200-04-XX-XX AF 200-04-XX-XX	49	25	76	44.5	22.5	20
	250 ml	10:1	AC 200-10-XX-XX AF 200-10-XX-XX	55	19	75	50.5	16.5	20
400	395 ml	1:1	AC 400-01-XX-XX AF 400-01-XX-XX	45	45	93	40	40	18
	400 ml	2:1	AC 400-02-XX-XX AF 400-02-XX-XX	52.5	37	93	47	33.5	20
	415 ml	4:1	AC 400-04-XX-XX AF 400-04-XX-XX	58	30	91	52.5	26.5	20
	490 ml	10:1	AC 400-10-XX-XX AF 400-10-XX-XX	67.5	22	92	61.5	20	22



Misch- und Dosiertechnik GmbH  
mixing and metering  
Georg-Fleischer-Straße 6  
66914 Waldmohr  
Germany  
fon +49 (6373) 819980  
fax +49 (6373) 8199820  
email info@t-s-i.de  
web www.t-s-i.de

Ersatz für: (substitute for)						general tolerance DIN ISO 2768 m + K	
draw.	25/09/24	name	CKF	checked	approved	Maßstab (scale)	1 : 2
change Nr.						format	A3
day						Werkstoff (material)	
name						Zuschnitt (cutting)	
Stückliste Nr. (parts list)		Benennung (description)		Oberflächenbehandlung (surface treatment)			
Projektionsmethode 1 ISO 5456-2		Maßblatt 2K Kartuschensets C- & F-System (dimensions 2C cartridge sets C- & F-system)		Zeichnungsnummer (drawing number) 0001-4903-00XX			